

▼ PLC Servo Synchronous Hydraulic System



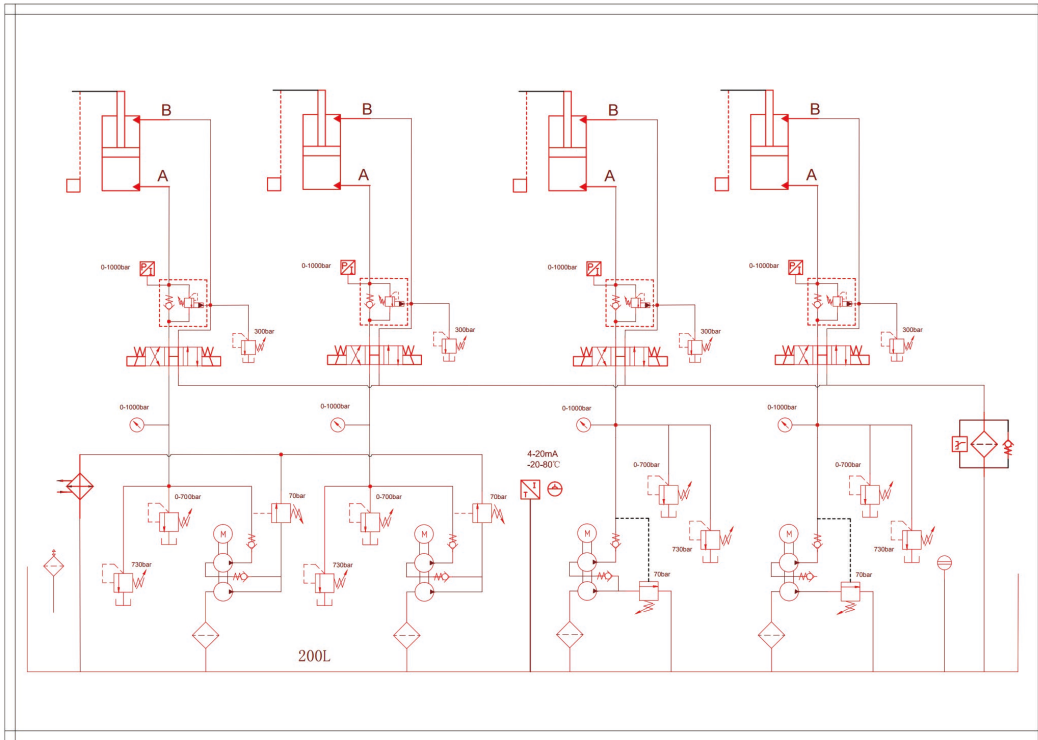
Technical features:

- ◆ Each point independent servo drive high pressure pump and valve group
- ◆ Continuous operation, no stuck, fast jacking speed
- ◆ Standard load balancing valve, high synchronous falling precision
- ◆ Speed continuously adjustable, stepless setting of running speed
- ◆ Pre-jacking, synchronous jacking, synchronous falling function
- ◆ Proportional slope displacement function, each point set the target displacement separately. The same proportion of operation
- ◆ Air cooled radiator, filter system
- ◆ Sensor parameter setting, pre-jacking tonnage setting, alarm pressure setting
- ◆ Overpressure alarm, overdifference alarm, sensor signal error alarm, displacement sensor overstroke alarm, servo alarm, liquid temperature level alarm
- ◆ Full protection frame, rain cover plate, forklift bottom, lifting lug
- ◆ Optional on-line control of multiple pump stations, Realize any combination of points

▼ PLCType Specification Sheet:

Model Number	Voltage (VAC)	power (KW)	High Pressure Flow (L/Min)	Available oil capacity(L)	Number of points	Displacement sensor range	Length of the displacement sensor cable	Function
HSE40120-4	230	1*4	0.5*4	120	4	500mm/1000MM	20M	Pre-jacking/synchronous jacking/synchronous landing
HSE80120-4	380	3*4	1.5*4	120	4	500mm/1000MM	20M	Pre-jacking/synchronous jacking/synchronous landing
HSE80200-8	380	3*8	1.5*8	200	8	500mm/1000MM	30M	Pre-jacking/synchronous jacking/synchronous landing
HSE9502004	380	5.5*4	2.7*4	200	4	500mm/1000MM	20M	Pre-jacking/synchronous jacking/synchronous landing
HSE950200-8	380	5.5*8	2.7*8	200	8	500mm/1000MM	30M	Pre-jacking/synchronous jacking/synchronous landing
HSE830120-4-3	380	3*12	1.5*12	120*3	4*3	500mm/1000MM	30M	Three sets of 12-point joint control, independent

▼ PLC Servo Hydraulic Schematic Diagram:



▼ Operation main interface:

JACKING SYSTEM 2024-01-28 09:43:20

SETTING MANUAL PRE-JACK AUTO ALARM

DIAPLAY				
	NO.1	NO.2	NO.3	NO.4
ENABLE	OFF	OFF	OFF	OFF
TARGET(mm)	20.0	30.0	40.0	50.0
POSITION(mm)	0.0	-0.7	0.7	0.7
ERROR(mm)	0.0	0.7	-0.7	-0.7
SENSOR(mm)	7.2	4.3	8.7	8.0
PRESSURE(Mpa)	0.1	0.0	0.0	0.0
TONNAGE(T)	0.0	0.0	0.0	0.0
POSITION(%)	0%	0%	0%	0%

SYSTEM STATE

COM LOCAL REMOTE
 RUNNING MANUAL AUTO
 COOLING

BUTTON & RUNING STATE

UP SELECT UP RUNNING UP REACHED
 DOWN SELECT DOWN RUNNING DOWN REACHED
 ZERO POSITION ALARM RESET

COMMON SETTING & DISPLAY

SPEED(%) 20 ALARM_ERR(mm) 20.0
 OIL LEVEL(mm) 85.2 OIL TEMP(°C) 20.9

JACKING SYSTEM 2024-01-28 10:13:56

SETTING MANUAL PRE-JACK AUTO ALARM

DIAPLAY												
	1-1	1-2	1-3	1-4	2-1	2-2	2-3	2-4	3-1	3-2	3-3	3-4
ENABLE	OFF	OFF	OFF	OFF	OFF	OFF	OFF	OFF	OFF	OFF	OFF	OFF
TARGET(mm)	0.0	0.0	0.0	0.0	0.0	0.0	0.0	0.0	30.0	30.0	30.0	30.0
POSITION(mm)	-120.6	-116.3	-120.0	-118.6	0.0	0.0	0.0	0.0	0.0	0.0	0.0	0.0
ERROR(mm)	0.0	116.3	120.0	118.6	0.0	0.0	0.0	0.0	0.0	0.0	0.0	0.0
SENSOR(mm)	0.0	0.0	0.0	0.0	0.0	0.0	0.0	0.0	0.0	0.0	0.0	0.0
PRESSURE(Mpa)	0.0	0.0	0.1	0.1	0.0	0.0	0.0	0.0	0.0	0.0	0.0	0.0
TONNAGE(T)	0.0	0.0	0.3	0.3	0.0	0.0	0.0	0.0	0.0	0.0	0.0	0.0

SYSTEM STATE

RUNNING MANUAL AUTO
 LOCAL1 REMOTE2 REMOTE3
 COM1 COOLING2 COOLING3
 COOLING4 COOLING5 COOLING6

BUTTON & RUNING STATE

UP SELECT UP RUNNING UP REACHED
 DOWN SELECT DOWN RUNNING DOWN REACHED
 ZERO POSITION ALARM RESET

SETTING & DISPLAY

SPEED(%) 30
 ALARM_ERR(mm) 1.0
 OIL TEMP(°C) 19.0
 OIL LEVEL(mm) 84.7

▼ Typical products:

